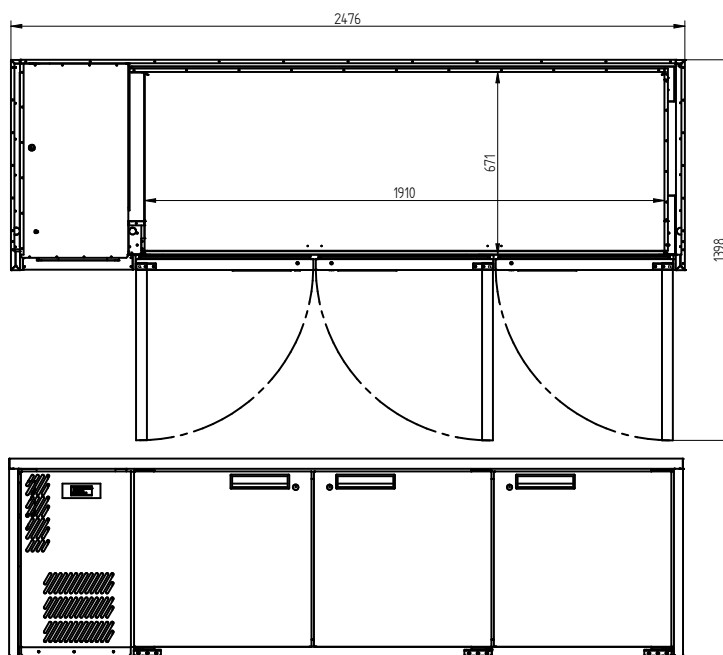
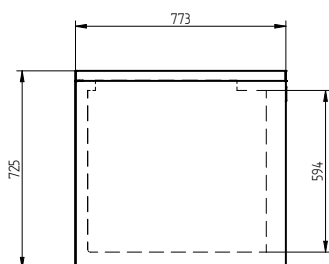


# HE3UFB



CATEGORY	FOODSERVICE COUNTERS
RANGE	<b>EMERALD</b>
UNIT	REFRIGERATOR
TYPE	SELF CONTAINED
DOORS	3



## SPECIFICATIONS

CAPACITY LITRES	900
TEMPERATURE	1°C / 4°C
FRONT BREATHING	
DIMENSIONS - W X D X H (ON CASTORS) MM	2476 W x 773 D x 845 H
WEIGHT UNPACKED (KG)	200

## STANDARD INCLUSIONS \*\*\*

DOOR TYPE	Standard: SD (Solid Door)    Optional: DR (Drawer), GD (Glass Door), PT (Pass Thru)
FINISH (INTERIOR AND EXTERIOR EXCLUDING REAR AND UNDER)	SS (Stainless Steel)
SHELVES/DOOR	2

## ELECTRICAL

POWER SUPPLY	10 amp	
FRIDGE MODELS	RUNNING AMPS	3.7

## GAS TYPE

REFRIGERANT	FRIDGE MODELS	R134a
-------------	---------------	-------

\*\*\* For **OPTIONS** refer to the current Williams Price Guide