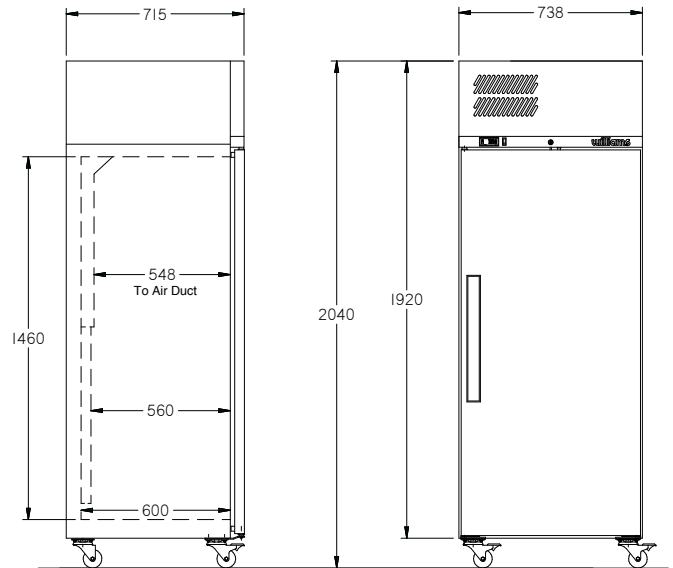
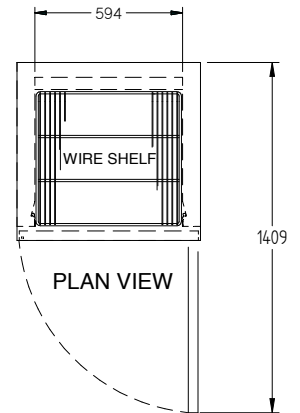


# HDS1SD



CATEGORY	GENERAL UPRIGHTS
RANGE	<b>Diamond Star</b>
UNIT	REFRIGERATOR
TYPE	SELF CONTAINED
DOORS	1



## SPECIFICATIONS

CAPACITY LITRES	520
TEMPERATURE	1°C / 4°C
DIMENSIONS - W X D X H (ON CASTORS) MM	738 W x 715 D x 2040 H
WEIGHT UNPACKED (KG)	160

## STANDARD INCLUSIONS \*\*\*

DOOR TYPE	SD (Solid Door), Optional: PT (Pass Thru)
FINISH (INTERIOR AND EXTERIOR, EXCLUDES REAR AND UNDER, STAINLESS STEEL INTERNAL FLOOR)	CB (White), CBB (Black), SS (Stainless Steel)
SHELVES/DOOR	4

## ELECTRICAL

POWER SUPPLY	10 amp
FRIDGE MODELS - SOLID DOORS	RUNNING AMPS 3.8

## GAS TYPE

REFRIGERANT	FRIDGE MODELS	R134a
-------------	---------------	-------

## REFRIGERATION WATTAGES FOR OPTIONAL REMOTE UNITS

FRIDGE MODELS - SOLID DOORS	440 @ -5°C SST
-----------------------------	----------------

\*\*\* For **OPTIONS** refer to the current Williams Price Guide