



**Electrolux**

## Warewashing Green&Clean Hood Type Dishwasher, Automatic with ZERO LIME Device & Filtering System

ITEM # \_\_\_\_\_

MODEL # \_\_\_\_\_

NAME # \_\_\_\_\_

SIS # \_\_\_\_\_

AIA # \_\_\_\_\_



**Electrolux**



### Warewashing

#### Green&Clean Hood Type Dishwasher, Automatic with ZERO LIME Device & Filtering System

504251 (EHT8TIL)

Green & Clean Hood Type  
Dishwasher, Automatic  
Double skin hood with ZERO  
LIME Device, Filtering System  
& Rinse aid dispenser,  
80racks/hour - 400 V/3N/50  
Hz

### Short Form Specification

#### Item No. \_\_\_\_\_

Unit to be Electrolux Green & Clean upright hood type hot water rinsing dishwasher with WASH SAFE CONTROL. Electrical characteristics to be \_\_\_\_400 volts, three phase 50Hz operation, convertible to single phase on-site. Uses 2 liters of clean water per final rinse cycle. 84°C rinse temperature and pressure guaranteed by built in atmospheric boiler and built in rinse booster pump. Washing performance is guaranteed by a powerful 0.8 kW wash pump and upper and lower stainless steel revolving washing spray arms. ZERO LIME Device automatically de-scales the whole hydraulic circuit and washing chamber. Unit to feature "WASH SAFE CONTROL" led light. Green light will indicate that all items washed have been properly rinsed. CLEAR BLUE filtering system removes majority of soil from the wash water. 304 Stainless steel construction to include automatic double skin insulated hood, external, front and side panels, wash tank, tank filter plus wash and rinse arms. Unit shall be field convertible from straight to corner operation. The unit shall include drain pump and rinse aid dispenser pump and is equipped with flexible fill hoses. Delivered on height-adjustable feet.

### Main Features

- ZERO LIME Device ensures total scale removal from the boiler, the hydraulic circuits and the washing chamber allowing ultimate performances and lower energy consumption thanks to the high-efficiency heating element.
- CLEAR BLUE advanced filtering system provides cleaner wash water and higher active detergent thus ensuring better washing performances and lower running costs.
- ETL-Sanitation approved (ANSI/NSF 3 sanitation standard) and DIN 10512 compliant.
- Requires only 2 liters of water per washing cycle thus ensuring low energy, water, detergent and rinse aid consumption.
- Built-in atmospheric boiler sized to raise incoming water to a minimum of 84 °C for sanitizing rinse. No external booster is required. Constant temperature of 84 °C throughout the rinsing cycle regardless of the network's water pressure.
- Green light of "WASH SAFE CONTROL" confirms that items have been rinsed properly.
- Unique temperature interlock guarantees required temperatures in both the wash and final rinse.
- Maximum capacity per hour of 80 racks or 1.440 dishes (High productivity mode) easy to switch to 63 racks or 1.134 dishes (ETL-Sanitation mode) by pressing a button.
- 45/84/150 seconds cycles (High productivity mode); 57/84/150 seconds cycles (ETL-Sanitation mode).
- Incorporated Soft Start feature to offer additional protection to more delicate items.
- Automatic start on hood closure and automatic hood lifting when cycle ends.
- Slanted wash arms and sloped ceiling to avoid detergent-filled wash water dropping on clean dishes after the rinsing phase, thus guaranteeing ideal washing results.
- Cycle may be interrupted at any time by lifting the hood.
- Automatic self-cleaning cycle and self-draining vertical wash pump and boiler to avoid bacteria proliferation.
- LED strip on the top keeps operator informed on machine status.
- State-of-the-art electronic controls with built-in programming, self-diagnostics for serviceability and automatic interior self-cleaning cycle.
- Built-in rinse aid dispenser with automatic initial and continuous cycle loading for perfect result while minimizing service and maintenance needs.
- Boiler power setting from control panel to facilitate technician's operation when reducing total installed power, thus avoiding the need of machine opening.
- Three phase electrical connection, convertible to single phase on-site.
- IP25 protection against water jet, solid objects and small animals (larger than 6 mm).

APPROVAL: \_\_\_\_\_



**Electrolux**

**Warewashing  
Green&Clean Hood Type Dishwasher,  
Automatic with ZERO LIME Device &  
Filtering System**

**Construction**

- Heavy duty Stainless steel construction. Internal cavity as well as exterior panels are in 304 series Stainless steel.
- Pressed tank in front position to facilitate cleaning.
- Automatic double skin insulated hood.
- Specially designed Stainless steel wash/rinse arms and nozzles provide superior cleaning action.
- Revolving interchangeable Stainless steel wash/rinse arms above and below the rack, screw out for simple clean up.
- Pre-arranged for on-site HACCP implementation and Energy Management device.
- Element protection from dry fire and low water.
- Unit to include drain pump and rinse aid dispenser pump.

**Included Accessories**

- 1 of Basket for 18 dinner plates - yellow PNC 867002
- 1 of Basket for 48 small cups or 24 cups - blue PNC 867007
- 2 of Yellow cutlery container PNC 864242

**Optional Accessories**

- 12lt external manual water softener PNC 860412 ☐
- 20lt external manual water softener PNC 860430 ☐
- 8lt external automatic water softener PNC 860413 ☐
- Baskets for 16 tilted glasses (h 220 mm - diam 100 mm) - blue PNC 867040 ☐
- Basket for 16 vertical glasses (h 70 mm - diam 100 mm) - blue PNC 867023 ☐
- Baskets for 25 tilted glasses (h 120 mm - diam 80 mm) - blue PNC 867021 ☐
- Basket for 12 soup bowls - green PNC 867000 ☐
- Basket for 18 dinner plates - yellow PNC 867002 ☐
- Basket for 48 small cups or 24 cups - blue PNC 867007 ☐
- Basket for 6 trays 530x370 mm - red PNC 866743 ☐
- Basket for bulk cutlery-capacity: 100 pieces - brown PNC 867009 ☐
- Basket semi-professional 500x500x190mm PNC 867024 ☐
- Cover rack for small and light items (500x500 baskets) PNC 867016 ☐
- External reverse osmosis filter for undercounter and hood type dishwashers with atmosphere boiler PNC 864026 ☐
- Filter for partial demineralization PNC 864017 ☐
- Filter for total demineralization PNC 864367 ☐
- Kit 4 plastic boxes for cutlery - yellow PNC 865574 ☐
- Kit 8 plastic boxes for cutlery - yellow PNC 780068 ☐
- Kit to measure total and partial water hardness PNC 864050 ☐
- Stainless steel inlet hose kit PNC 864016 ☐
- Yellow cutlery container PNC 864242 ☐



## **Warewashing Green&Clean Hood Type Dishwasher, Automatic with ZERO LIME Device & Filtering System**

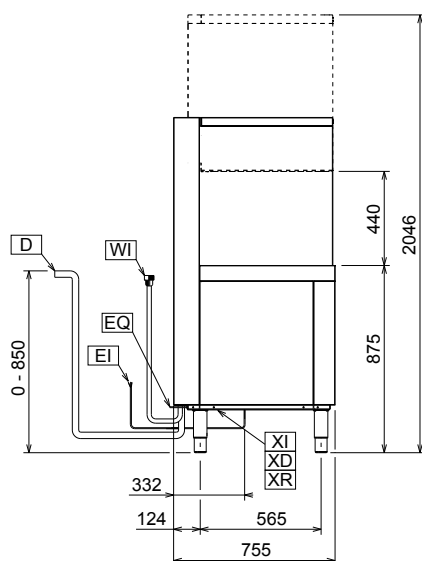
Technical drawing of the front view of a rectangular box. The drawing includes the following dimensions and labels:

- Overall Dimensions:**
  - Top width: 325
  - Top width (inner): 268
  - Top width (further in): 241
  - Top width (further in): 215
  - Top width (further in): 55
  - Left height: 420
  - Left height (inner): 335
  - Right height: 358
  - Right height (inner): 295
  - Bottom width (left): 334
  - Bottom width (right): 334
  - Bottom width (inner): 294
- Internal Features and Labels:**
  - Top-left corner labels: XI, XD, XR
  - Top-center label: EQ
  - Top-right corner label: D
  - Bottom-right label: WI
  - Bottom-center label: EI
- Other Dimensions:**
  - Top-left offset: 90
  - Top-left offset: 36
  - Top-right offset: 31

**CWI** = Cold Water inlet  
**D** = Drain  
**EI** = Electrical connection  
**EQ** = Equipotential screw  
**HWI** = Hot water inlet  
**WI** = Water inlet

**XD** = Detergent connection  
**XI** = Chemicals inlet  
**XR** = Rinse aid connection

## Side



**Supply voltage:**

<b>Supply voltage:</b>	400 V/3N ph/50 Hz
<b>504251(EHT8TIL)</b>	230 V / 1+N / 50 Hz; 230 V / 3 / 50 Hz
<b>Convertible to:</b>	
<b>Default Installed Power:*</b>	9.9 kW
<b>Reducible Installed Power:*</b>	6.9 kW
<b>Boiler Heating Elements Power:*</b>	9 kW
<b>Boiler Reducible To:*</b>	6 kW
<b>Tank heating elements:</b>	3 kW
<b>Wash pump size:</b>	0.8 kW

<b>Water supply temperature:</b>	10-65°C
<b>Water supply hardness (MAX):</b>	14°FH (8°dH)
<b>Inlet Water supply pressure:</b>	0.5 - 7 bar
<b>Water consumption per cycle (lt):</b>	2
<b>Boiler Capacity (lt):</b>	12
<b>Tank Capacity (lt):</b>	24
<b>Incoming water line size:</b>	G 3/4"
<b>Drain line size:</b>	20.5 mm

### Key Information:

<b>N° of cycles:</b>	3
<b>Duration cycle - High productivity:*</b>	45/84/150 sec.
<b>Duration cycle - ETL Sanitation:*</b>	57/84/150 sec.
<b>Racks per hour - High productivity: *</b>	80
<b>Racks per hour - ETL Sanitation: *</b>	63
<b>Dishes per hour - High productivity: *</b>	1440
<b>Dishes per hour - ETL Sanitation: *</b>	1134
<b>Wash temperature - High productivity:</b>	55-65 °C
<b>Wash temperature - ETL Sanitation:</b>	75 °C MIN
<b>Rinse temperature (MIN):</b>	84 °C
<b>External dimensions, Height:</b>	1567 mm
<b>External dimensions, Width:</b>	667 mm
<b>External dimensions, Depth:</b>	755 mm
<b>Net weight:</b>	119 kg
<b>Shipping weight:</b>	132 kg
<b>Shipping volume:</b>	1.04 m <sup>3</sup>
<b>Packaging size (WxDxH):</b>	667x755x1567
<b>Noise level:</b>	<63 dBA

\* According to market standard, the productivity is declared at an inlet water supply temperature of 50°C. If the water is supplied at 65°C, the power can be reduced by 3 kW without any loss in productivity.

**NOTE:**

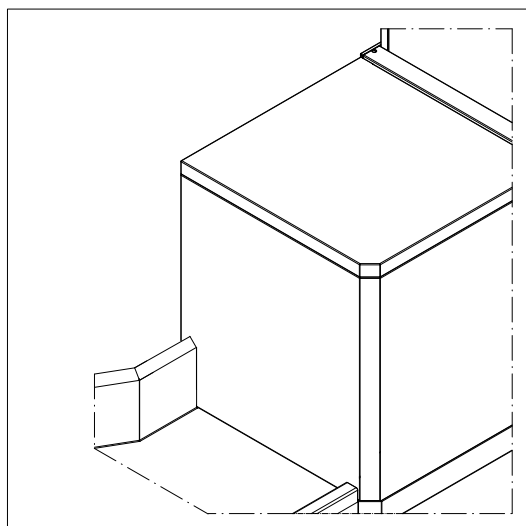
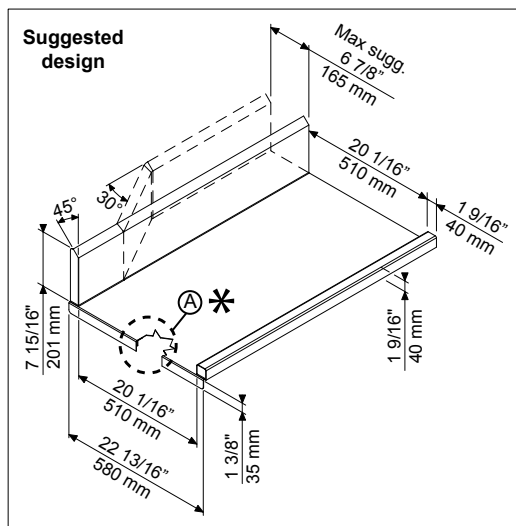
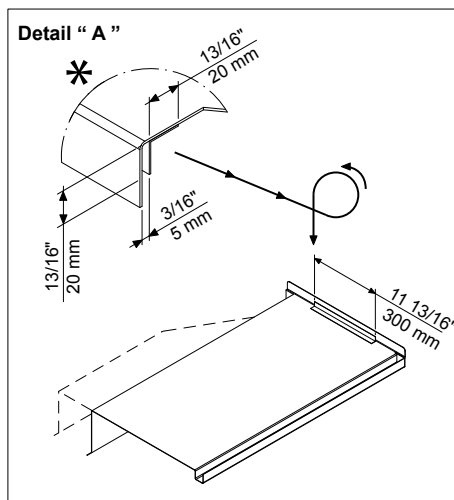
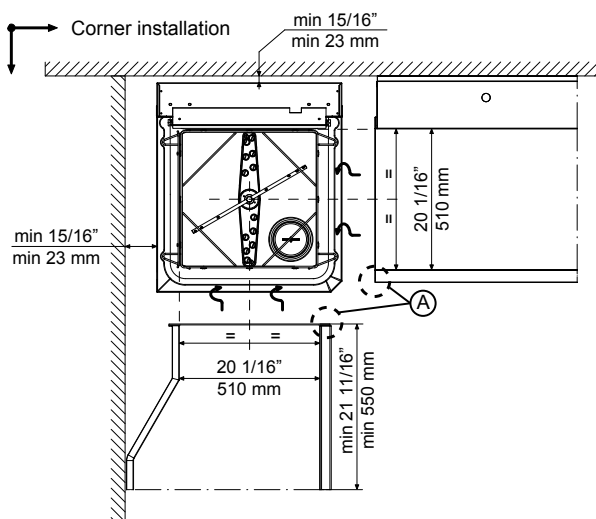
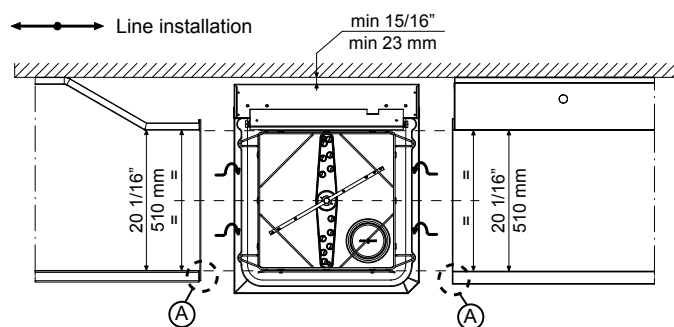
**NOTE:**  
If the water supply temperature is less than 50°C, it is necessary to request higher power to maintain productivity.



Electrolux

**Warewashing  
Green&Clean Hood Type Dishwasher,  
Automatic with ZERO LIME Device &  
Filtering System**

**Recommended table connection**



All tables must be connected to the dishwashing units according to local regulations and industry standards which may differ from the recommendations herein suggested. Electrolux Professional is not liable for any failure in complying with local design standards.

Doc Nr : 59566BD00



**Warewashing  
Green&Clean Hood Type Dishwasher, Automatic with ZERO LIME Device  
& Filtering System**  
The company reserves the right to make modifications to the products  
without prior notice. All information correct at time of printing.

2013.03.07