



Electrolux

Warewashing Large Glasswasher, 1 Cycle - 60b/hr with Multirack

ITEM # _____

MODEL # _____

NAME # _____

SIS # _____

AIA # _____



Electrolux



Warewashing

Large Glasswasher, 1 Cycle - 60b/hr with Multirack

402068 (NGWGMS)

Glasswasher (large) with
multi-rack support (Oceania)

Short Form Specification

Item No. _____

304 AISI stainless steel front panel, wash tank and wash and rinse arms. Double skinned door and cabinet. Upper and lower rotary washing arms and rinsing arms. Separate washing and rinsing circuits. Built-in 5 litre boiler, washing temperature 55/65°C and hot rinse temperature 80/90°C. 1 washing cycle: 60 seconds. Rinse aid, detergent dispenser and drain pumps. Hourly capacity: 60 baskets.

Provided with a double rack support allowing the use of 3 types of racks: the first rail support accommodates standard 400x400 mm racks; the second can accommodate either 14"x14" (365x365 mm) or 17"x14" (435x365 mm) racks, both of which stop in the middle of the washing chamber.

Supplied with: n. 1 basket for glasses (395x395mm).

Main Features

- Pre-rinse/cold rinse cycle provides double function: either as pre-rinse, used before starting the cycle to remove the heaviest residues from the wares, or as cold rinse at the end of the cycle to cool down beer and wine glasses.
- Provided with a double rack support allowing the use of 3 types of racks: the first rail support accommodates standard 400x400 mm racks; the second can accommodate either 14"x14" (365x365 mm) or 17"x14" (435x365 mm) racks, both of which stop in the middle of the washing chamber.
- Low noise level.
- 60 seconds cycle.
- Simple service from the front.
- Simple control panel.
- Equipped with drain pump for easy and quick installation without opening the machine.
- Built-in rinse water heater to increase the temperature of the final rinse water.
- Adjustable feet for full access underneath the machine for cleaning.

Construction

- Counter-balanced door to minimize impact when opening and closing.
- Fully pressed wash tank with rounded corners.
- Internal elements (arms and filter) easily extractable.
- Wash/rinse arms and nozzles in stainless steel.
- Double skinned construction.
- Completely closed on the back by a cover plate.
- 304 AISI stainless steel front panel, load bearing frame, wash tank, wash and rinse arms.
- Unit to feature smooth surfaces to facilitate cleaning.
- Unit to feature rinse aid and detergent dispenser pumps.
- Finished in top quality materials to ensure durability.

APPROVAL: _____



Electrolux

Warewashing Large Glasswasher, 1 Cycle - 60b/hr with Multirack

Included Accessories

- 1 of Basket for glasses (h 100 mm) PNC 867053

Optional Accessories

- Stainless steel tank filter PNC 864003 ☐
- Filter for partial demineralization PNC 864017 ☐
- Kit to measure total and partial water hardness PNC 864050 ☐
- Rinse booster pump kit for single tank pressure dishwasher PNC 864051 ☐
- Yellow cutlery container PNC 864242 ☐
- Kit 4 plastic boxes for cutlery - yellow PNC 865574 ☐
- Cover rack for small and light items (500x500 baskets) PNC 867016 ☐
- Basket for 16 plates diam.190 mm, 8 plates diam. 240 mm PNC 867052 ☐
- Basket for glasses (h 100 mm) PNC 867053 ☐
- Basket for glasses (h 200 mm) PNC 867054 ☐
- Basket for glasses and saucers/cutlery inserts PNC 867055 ☐
- Basket for glasses with angled base PNC 867056 ☐
- Round basket kit with square frame PNC 867057 ☐
- Insert for "flute" glasses PNC 867058 ☐
- Insert for 14 saucers PNC 867060 ☐
- Inclined insert for cups PNC 867061 ☐
- Insert for 7 plates d. 240mm PNC 867062 ☐



Warewashing
Large Glasswasher, 1 Cycle - 60b/hr with Multirack

The company reserves the right to make modifications to the products without prior notice. All information correct at time of printing.

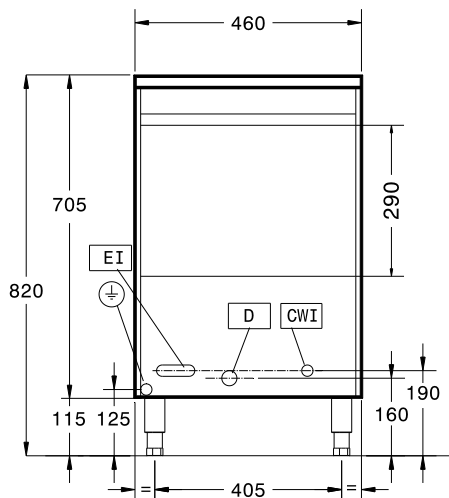
2013.04.24



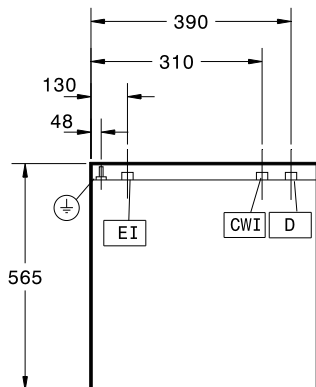
Electrolux

Warewashing Large Glasswasher, 1 Cycle - 60b/hr with Multirack

Front

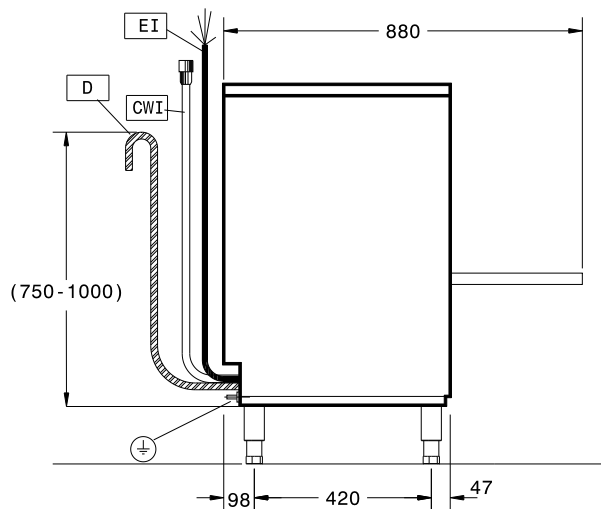


Top



CWI = Cold Water inlet
D = Drain
EI = Electrical connection

Side



Electric

Supply voltage:	
402068(NGWGMS)	230 V/1N ph/50 Hz
Total Watts:	3.3 kW
Boiler heating elements:	3 kW
Tank heating elements:	0.8 kW
Wash pump size:	0.3 kW

Water:

Pressure:	2-3 bar
Water supply temperature:	10-60°C
Water supply hardness (MAX):	7-14°FH (4-8°dH)
Inlet Water supply pressure:	29 - 44 psi (2 - 3 bar)
Working cycles time (sec.):	60
Boiler Capacity (lt):	5
Incoming water line size:	G 3/4"
Washing cycle temperature:	55-65 °C
Washing cycle tank capacity (lt):	6
Hot rinse cycle duration (sec.):	16
Hot rinse cycle temperature:	80-90 °C
Hot rinse cycle water consumption (lt):	2.3

Key Information:

N° of cycles - sec.:	1 (60)
Baskets per hour:	60
External dimensions, Height:	820 mm
External dimensions, Width:	460 mm
External dimensions, Depth:	565 mm
Net weight:	37 kg
Shipping weight:	42 kg
Shipping height:	900 mm
Shipping width:	500 mm
Shipping depth:	620 mm
Shipping volume:	0.28 m³
Noise level:	<61 dBA
Cell dimensions - width:	400 mm
Cell dimensions - depth:	400 mm
Cell dimensions - height:	290 mm



Warewashing
Large Glasswasher, 1 Cycle - 60b/hr with Multirack

The company reserves the right to make modifications to the products without prior notice. All information correct at time of printing.

2013.04.24