

# ICS PACIFIC ROMA Hi TOP™

REFRIGERATED, HEATED & AMBIENT DISPLAYS

## Cake/Pastry Display Cabinet



120cm Black Marble



150cm Stainless Steel

### Dimensions

Width - 90/120/150/180cm

Depth - 85cm

Height - 140cm

### Temperature Range

**Refrigerated** +2°C to +10°C

@30°C ambient temp

+60% humidity

**Heated** +40°C to +75°C

### Features

Available in stainless steel or black marble

Other marble colours available to order

Brilliant internal illumination to each shelf

Illuminated front external panel (Marble models only)

Electronic temperature control and display

Heated front glass (Refrigerated models)

Ventilated system (Refrigerated & heated models)

Automatic defrost (Refrigerated models)

Safety cut-out switch (Refrigerated and heated models)

Three adjustable shelves plus base

Fitted with wheels

Adjustable stainless steel legs available

Available in refrigerated, heated and ambient displays

Suitable for cakes, sandwiches, focaccias, pies, pastries & drinks

Three years parts and labour warranty\*

(\*Conditions apply)



Due to ICS PACIFIC's ongoing dedication and commitment to continuous improvement appearance and specifications may change. Please confirm prior to ordering.

ICS PACIFIC is a registered trademark of Golmar Nominees Pty Ltd

31 Healey Road Dandenong South, Victoria 3175 Australia.  
PO Box 4140 Dandenong South BC Victoria 3164

**Phone** (61) 03 9706 5115 **Fax** (61) 03 9706 6556 **Web** [www.icspacific.com.au](http://www.icspacific.com.au)

**Toll Free: Sales** 1800 664 664 **Service** 1800 630 360 **Email** [info@icspacific.com.au](mailto:info@icspacific.com.au)



## Cake/Pastry Display Cabinet



150cm Black Marble



90cm Stainless Steel

### Dimensions

**Width - 90/120/150/180/240cm**

**Depth - 73cm**

**Height - 120cm**

### Temperature Range

**Refrigerated +2°C to +10°C**

**@30°C ambient temp**

**+60% humidity**

**Heated +40°C to +75°C**

### Features

Available in stainless steel or black marble

Other marble colours available to order

Brilliant internal illumination to each shelf

Illuminated front external panel (Marble models only)

Electronic temperature control and display

Heated front glass (Refrigerated models)

Ventilated system (Refrigerated & heated models)

Automatic defrost (Refrigerated models)

Safety cut-out switch (Refrigerated and heated models)

Two adjustable shelves plus base

Fitted with wheels

Adjustable stainless steel legs available

Available in refrigerated, heated and ambient displays

Suitable for cakes, sandwiches, focaccias, pies, pastries & drinks

Three years parts and labour warranty\*  
(\*Conditions apply)

Due to ICS PACIFIC's ongoing dedication and commitment to continuous improvement appearance and specifications may change. Please confirm prior to ordering.

ICS PACIFIC is a registered trademark of Golmar Nominees Pty Ltd

31 Healey Road Dandenong South, Victoria 3175 Australia.  
PO Box 4140 Dandenong South BC Victoria 3164

**Phone** (61) 03 9706 5115 **Fax** (61) 03 9706 6556 **Web** [www.icspacific.com.au](http://www.icspacific.com.au)

**Toll Free: Sales** 1800 664 664 **Service** 1800 630 360 **Email** [info@icspacific.com.au](mailto:info@icspacific.com.au)



# ICS PACIFIC ROMA RETRO™

REFRIGERATED, HEATED & AMBIENT DISPLAYS

## Cake/Pastry Display Cabinet



### Dimensions

Width - 90/120/150/180/240cm

Depth - 73cm

Height - 120cm

### Temperature Range

**Refrigerated** +2°C to +10°C

@30°C ambient temp

+60% humidity

**Heated** +40°C to +75°C

### Features

- Available in stainless steel or black marble
- Other marble colours available to order
- Brilliant internal illumination to each shelf
- Illuminated front external panel (Marble models only)
- Electronic temperature control and display
- Heated front glass (Refrigerated models)
- Ventilated system (Refrigerated & heated models)
- Automatic defrost (Refrigerated models)
- Safety cut-out switch (Refrigerated and heated models)
- Two adjustable shelves plus base
- Fitted with wheels
- Adjustable stainless steel legs available
- Available in refrigerated, heated and ambient displays
- Suitable for cakes, sandwiches, focaccias, pies, pastries & drinks
- Three years parts and labour warranty\* (\*Conditions apply)



Due to ICS PACIFIC's ongoing dedication and commitment to continuous improvement appearance and specifications may change. Please confirm prior to ordering.

ICS PACIFIC is a registered trademark of Golmar Nominees Pty Ltd

31 Healey Road Dandenong South, Victoria 3175 Australia.  
PO Box 4140 Dandenong South BC Victoria 3164

**Phone** (61) 03 9706 5115 **Fax** (61) 03 9706 6556 **Web** [www.icspacific.com.au](http://www.icspacific.com.au)  
**Toll Free: Sales** 1800 664 664 **Service** 1800 630 360 **Email** [info@icspacific.com.au](mailto:info@icspacific.com.au)



# ICS PACIFIC ROMA VERTICAL™

REFRIGERATED, HEATED & AMBIENT DISPLAYS

## Cake/Pastry Display Cabinet



### Dimensions

Width - 90/120/150/180cm

Depth - 73cm

Height - 185cm

### Temperature Range

**Refrigerated** +2°C to +10°C

@30°C ambient temp

+60% humidity

**Heated** +40°C to +75°C

### Features

Available in stainless steel or black marble

Other marble colours available to order

Brilliant internal illumination to each shelf

Illuminated front external panel (Marble models only)

Electronic temperature control and display

Heated front glass (Refrigerated models)

Ventilated system (Refrigerated & heated models)

Automatic defrost (Refrigerated models)

Safety cut-out switch (Refrigerated and heated models)

Four adjustable shelves plus base

Fitted with wheels

Adjustable stainless steel legs available

Available in refrigerated, heated and ambient displays

Suitable for cakes, sandwiches, focaccias, pies, pastries & drinks

Three years parts and labour warranty\*  
(\*Conditions apply)



Due to ICS PACIFIC's ongoing dedication and commitment to continuous improvement appearance and specifications may change. Please confirm prior to ordering.

ICS PACIFIC is a registered trademark of Golmar Nominees Pty Ltd

31 Healey Road Dandenong South, Victoria 3175 Australia.  
PO Box 4140 Dandenong South BC Victoria 3164

**Phone** (61) 03 9706 5115 **Fax** (61) 03 9706 6556 **Web** [www.icspacific.com.au](http://www.icspacific.com.au)

**Toll Free: Sales** 1800 664 664 **Service** 1800 630 360 **Email** [info@icspacific.com.au](mailto:info@icspacific.com.au)



# ICS PACIFIC ROMA Hi TOP™

REFRIGERATED, HEATED & AMBIENT DISPLAYS

## Cake/Pastry Display Cabinet



120cm Black Marble



150cm Stainless Steel

### Dimensions

Width - 90/120/150/180cm

Depth - 85cm

Height - 140cm

### Temperature Range

**Refrigerated** +2°C to +10°C

@30°C ambient temp

+60% humidity

**Heated** +40°C to +75°C

### Features

Available in stainless steel or black marble

Other marble colours available to order

Brilliant internal illumination to each shelf

Illuminated front external panel (Marble models only)

Electronic temperature control and display

Heated front glass (Refrigerated models)

Ventilated system (Refrigerated & heated models)

Automatic defrost (Refrigerated models)

Safety cut-out switch (Refrigerated and heated models)

Three adjustable shelves plus base

Fitted with wheels

Adjustable stainless steel legs available

Available in refrigerated, heated and ambient displays

Suitable for cakes, sandwiches, focaccias, pies, pastries & drinks

Three years parts and labour warranty\*

(\*Conditions apply)



Due to ICS PACIFIC's ongoing dedication and commitment to continuous improvement appearance and specifications may change. Please confirm prior to ordering.

ICS PACIFIC is a registered trademark of Golmar Nominees Pty Ltd

31 Healey Road Dandenong South, Victoria 3175 Australia.  
PO Box 4140 Dandenong South BC Victoria 3164

**Phone** (61) 03 9706 5115 **Fax** (61) 03 9706 6556 **Web** [www.icspacific.com.au](http://www.icspacific.com.au)

**Toll Free: Sales** 1800 664 664 **Service** 1800 630 360 **Email** [info@icspacific.com.au](mailto:info@icspacific.com.au)



# ICS PACIFIC TORINO™

REFRIGERATED, HEATED DISPLAYS

## Bench Top Display



### Dimensions

Width - 90/120/150cm

Depth - 47cm

Height - 70cm

### Temperature Range

**Refrigerated** +2°C to +8°C

@30°C ambient temp

+60% humidity

**Heated** +40°C to +75°C

### Features

Elegant decor in glass and stainless steel finish

Can be placed on top of bench or built-in

Brilliant internal illumination

Electronic temperature control and display

Safety cut-out switch

Ventilated system

Heated front glass (Refrigerated models)

Automatic defrost (Refrigerated models)

One adjustable shelf plus base

Suitable for cakes, sandwiches, focaccias, pies, pastries & drinks

**Three years parts and labour warranty\***

(\*Conditions apply)



Due to ICS PACIFIC's ongoing dedication and commitment to continuous improvement appearance and specifications may change. Please confirm prior to ordering.

ICS PACIFIC is a registered trademark of Golmar Nominees Pty Ltd

31 Healey Road Dandenong South, Victoria 3175 Australia.  
PO Box 4140 Dandenong South BC Victoria 3164

**Phone** (61) 03 9706 5115 **Fax** (61) 03 9706 6556 **Web** [www.icspacific.com.au](http://www.icspacific.com.au)  
**Toll Free: Sales** 1800 664 664 **Service** 1800 630 360 **Email** [info@icspacific.com.au](mailto:info@icspacific.com.au)



# ICS PACIFIC® ROMA CASHIER TABLE

## Counter in Marble or Stainless Steel Finish



### Dimensions

Width	- 60cm	120cm
Depth	- 73cm	73cm
Height	- 79cm	79cm

### Features

- Matches **ICS PACIFIC** Roma range
- Available in stainless steel or black marble facia
- Other marble colours available to order
- Other sizes available to order
- One shelf + base storage at rear
- Adjustable feet
- Three years parts and labour warranty\*  
(\*Conditions apply)

### Options

Special sizes and shapes can be manufactured to order



Due to **ICS PACIFIC**'s ongoing dedication and commitment to continuous improvement appearance and specifications may change. Please confirm prior to ordering.

**ICS PACIFIC** is a registered trademark of Golmar Nominees Pty Ltd

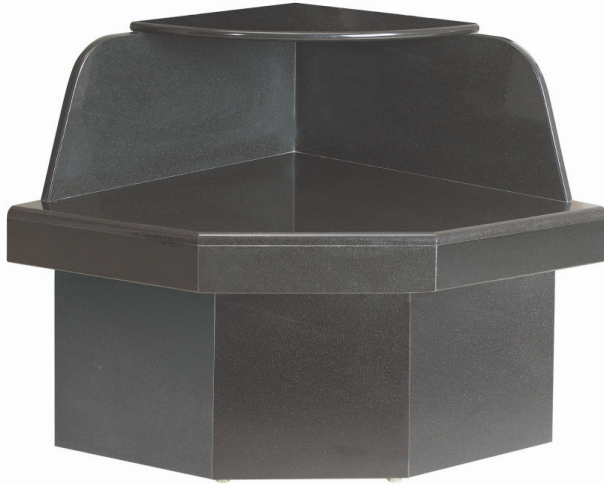
31 Healey Road Dandenong South, Victoria 3175 Australia.  
PO Box 4140 Dandenong South BC Victoria 3164

**Phone** (61) 03 9706 5115 **Fax** (61) 03 9706 6556 **Web** [www.icspacific.com.au](http://www.icspacific.com.au)  
**Toll Free: Sales** 1800 664 664 **Service** 1800 630 360 **Email** [info@icspacific.com.au](mailto:info@icspacific.com.au)

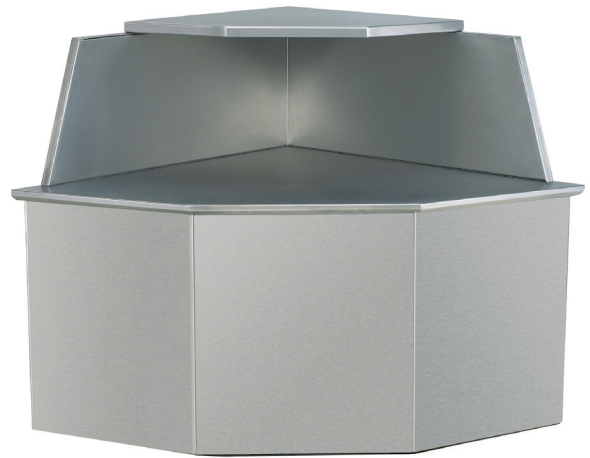


# ICS PACIFIC ROMA CORNER TABLE

## Counter in Marble or Stainless Steel Finish



73cm Black Marble



73cm Stainless Steel

### Dimensions

Width - 73/84cm

Depth - 73/84cm

Height - 79/79cm

### Features

To suit all ICS PACIFIC Roma and Roma Hi Top Models  
Available in stainless steel or black marble facia  
Other marble colours available to order  
Adjustable feet

Three years parts and labour warranty\*  
(\*Conditions apply)



Due to ICS PACIFIC's ongoing dedication and commitment to continuous improvement appearance and specifications may change. Please confirm prior to ordering.

ICS PACIFIC is a registered trademark of Golmar Nominees Pty Ltd

31 Healey Road Dandenong South, Victoria 3175 Australia.  
PO Box 4140 Dandenong South BC Victoria 3164

Phone (61) 03 9706 5115 Fax (61) 03 9706 6556 Web [www.icspacific.com.au](http://www.icspacific.com.au)  
Toll Free: Sales 1800 664 664 Service 1800 630 360 Email [info@icspacific.com.au](mailto:info@icspacific.com.au)

