



HOSHIZAKI ICE MACHINES

FM-120EE-50

Product Features

- Premium flaked ice
- Hoshizaki dry flakes cool quickly
- Choice of ice storage capacity
- Choice of ice production capacity
- Reliable one piece auger system
- As per FM-120-EE
- Durable stainless steel exterior



Range

- FM-120EE
- FM-120EE-50
- FM-481AGE



Product Specifications

• **Dimensions**

Width: 940mm
Depth: 600mm
Height: 800mm

• **Weight**

Net: 81kg
Packed: 94kg

• **AC Supply Voltage**

220-240V/50Hz, 10AMPs

• **Condenser**

Air cooled

• **Refrigerant**

R134a

• **Ambient**

5°C - 40°C

• **Water Temp & Pressure**

5°C - 35°C/50kpa - 800kpa

• **Ice Production per 24 hours**

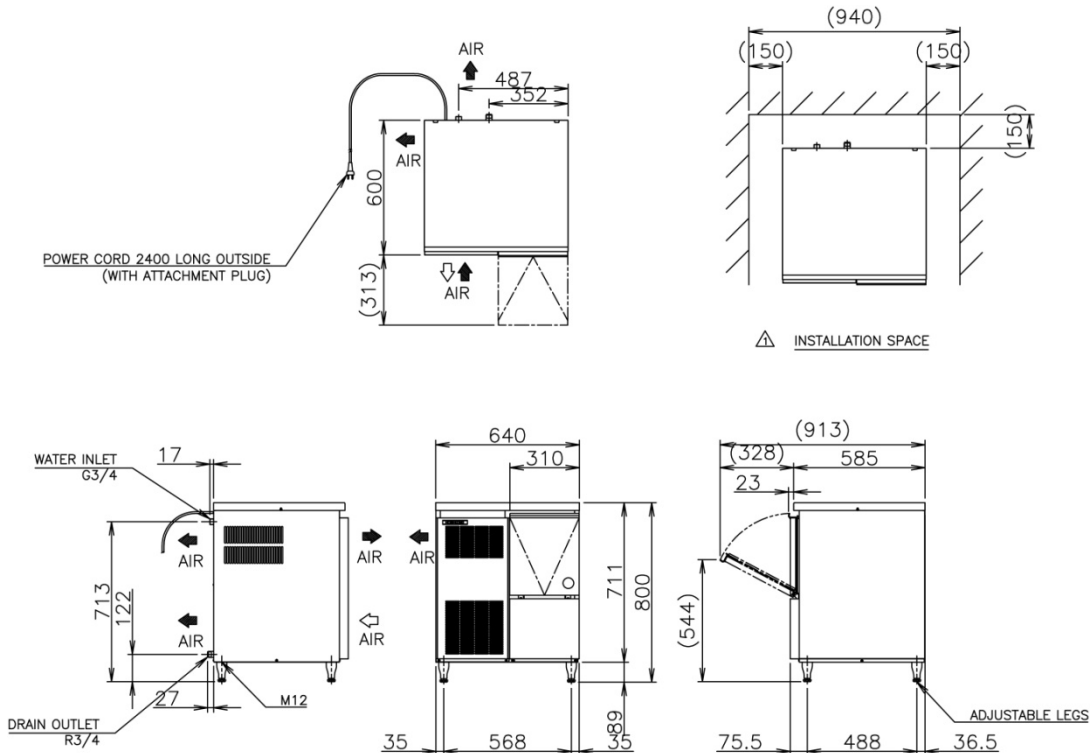
Air temp: 10°C Water temp: 10°C - approx 125kg
Air temp: 21°C Water temp: 15°C - approx 115kg
Air temp: 32°C Water temp: 21°C - approx 85kg

• **Maximum Storage Capacity**

57kg

• **Accessories**

Scoop
Installation Kit





HOSHIZAKI ICE MACHINES

FM-251AFE

Product Features

- Premium Flaked Ice
- Choice of ice storage capacity
- Choice of ice production capacity
- Reliable auger system
- Hoshizaki dry flakes cool quickly
- Durable stainless steel exterior

Product Specifications

DIMENSIONS

Width: 560mm
Depth: 700mm
Height: 780mm

WEIGHT

Net: 86kg
Packed: 98kg

TYPE

Modular

AC SUPPLY VOLTAGE

220-240V/50Hz, 10AMPs



FM-251AFE



HOSHIZAKI
ICE MACHINES

CONDENSER

Air Cooled

REFRIGERANT

R404a

AMBIENT

5°C - 40°C

WATER TEMP & PRESSURE

5°C - 35°C/50kpa - 800kpa

ICE PRODUCTION PER 24 HOURS

Air temp: 10°C Water temp: 10°C - approx 246kg

Air temp: 21°C Water temp: 15°C - approx 200kg

Air temp: 32°C Water temp: 21°C - approx 164kg

MAXIMUM STORAGE CAPACITY

Select storage bin

ACCESSORIES

Scoop

Installation Kit



HOSHIZAKI ICE MACHINES

FM-251AWFE

Product Features

- Premium Flaked Ice
- Choice of ice storage capacity
- Choice of ice production capacity
- Reliable auger system
- Hoshizaki dry flakes cool quickly
- Durable stainless steel exterior

Product Specifications

DIMENSIONS

Width: 560mm
Depth: 699mm
Height: 780mm

WEIGHT

Net: 86kg
Packed: 98kg

TYPE

AC SUPPLY VOLTAGE

220-240V/50Hz, 10AMPs





FM-251AFE

CONDENSER

Water Cooled

REFRIGERANT

R404A

AMBIENT

5°C - 40°C

WATER TEMP & PRESSURE

5°C - 35°C/50kpa - 800kpa

ICE PRODUCTION PER 24 HOURS

Air temp: 10°C Water temp: 10°C - approx 225kg

Air temp: 21°C Water temp: 15°C - approx 205kg

Air temp: 32°C Water temp: 21°C - approx 185kg

MAXIMUM STORAGE CAPACITY

Select storage bin

ACCESSORIES

Scoop

Installation Kit